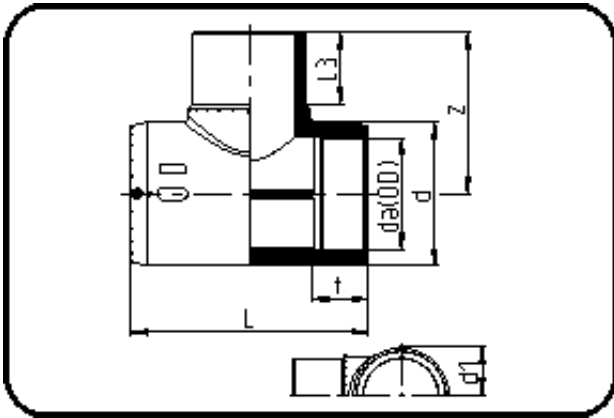


## E-Schweissbare Fittings



Code: 176

- E-T-Stück
- MOP Wasser 16bar / Gas 10bar
- W/P-TW
- formgespritzt
- Heizwendelschweissung
- PE 100-RC schwarz

Dimension	Code	Detail	Gewicht
63	70.176.0063.11	63 SDR 17-11	0.56

	Einheit	Nominale	Tol+	Tol-
da(OD)	mm	63	0.00	0.00
L	mm	185,5	4.50	0.00
L3	mm	66	2.25	2.25
d	mm	87	0.75	0.75
d1	mm	58,5	1.50	1.50
t	mm	62	1.50	1.50
z	mm	117,5	2.25	2.25