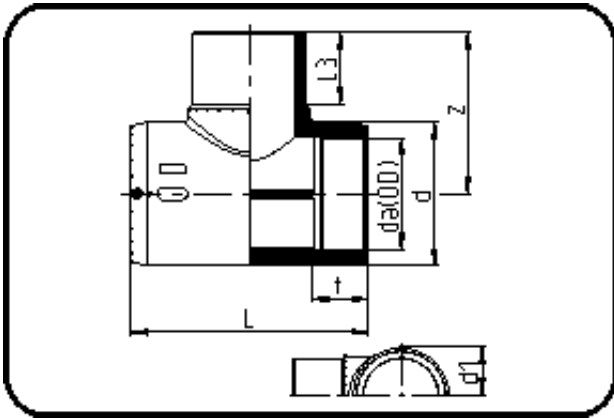


## E-Schweissbare Fittings



Code: 176

- E-T-Stück
- MOP Wasser 16bar / Gas 10bar
- W/P-TW
- formgespritzt
- Heizwendelschweissung
- PE 100-RC schwarz

Dimension	Code	Detail	Gewicht
32	70.176.0032.11	32 SDR 11	0.12

	Einheit	Nominale	Tol+	Tol-
da(OD)	mm	32	0.00	0.00
L	mm	122,5	4.50	0.00
L3	mm	47	2.25	2.25
d	mm	47	0.75	0.75
d1	mm	43,5	1.50	1.50
t	mm	43	1.50	1.50
z	mm	76	1.50	1.50