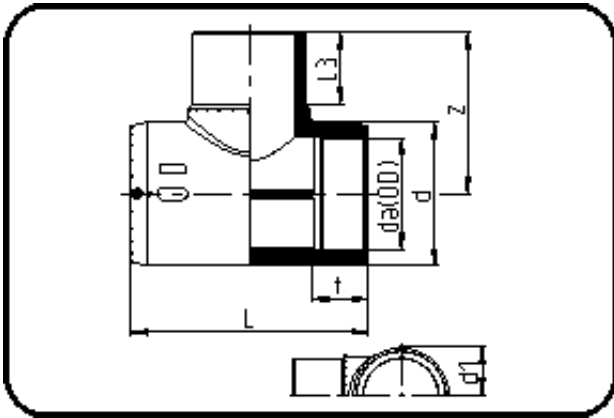


## E-Schweissbare Fittings



Code: 176

- E-T-Stück
- MOP Wasser 16bar / Gas 10bar
- W/P-TW
- formgespritzt
- Heizwendelschweissung
- PE 100-RC schwarz

Dimension	Code	Detail	Gewicht
110	70.176.0110.11	110 SDR 17-11	2.63

	Einheit	Nominale	Tol+	Tol-
da(OD)	mm	110	0.00	0.00
L	mm	326,5	6.00	0.00
L3	mm	101	2.25	2.25
d	mm	148,5	1.50	1.50
d1	mm	85	1.50	1.50
t	mm	71,5	1.50	1.50
z	mm	191	2.25	2.25